



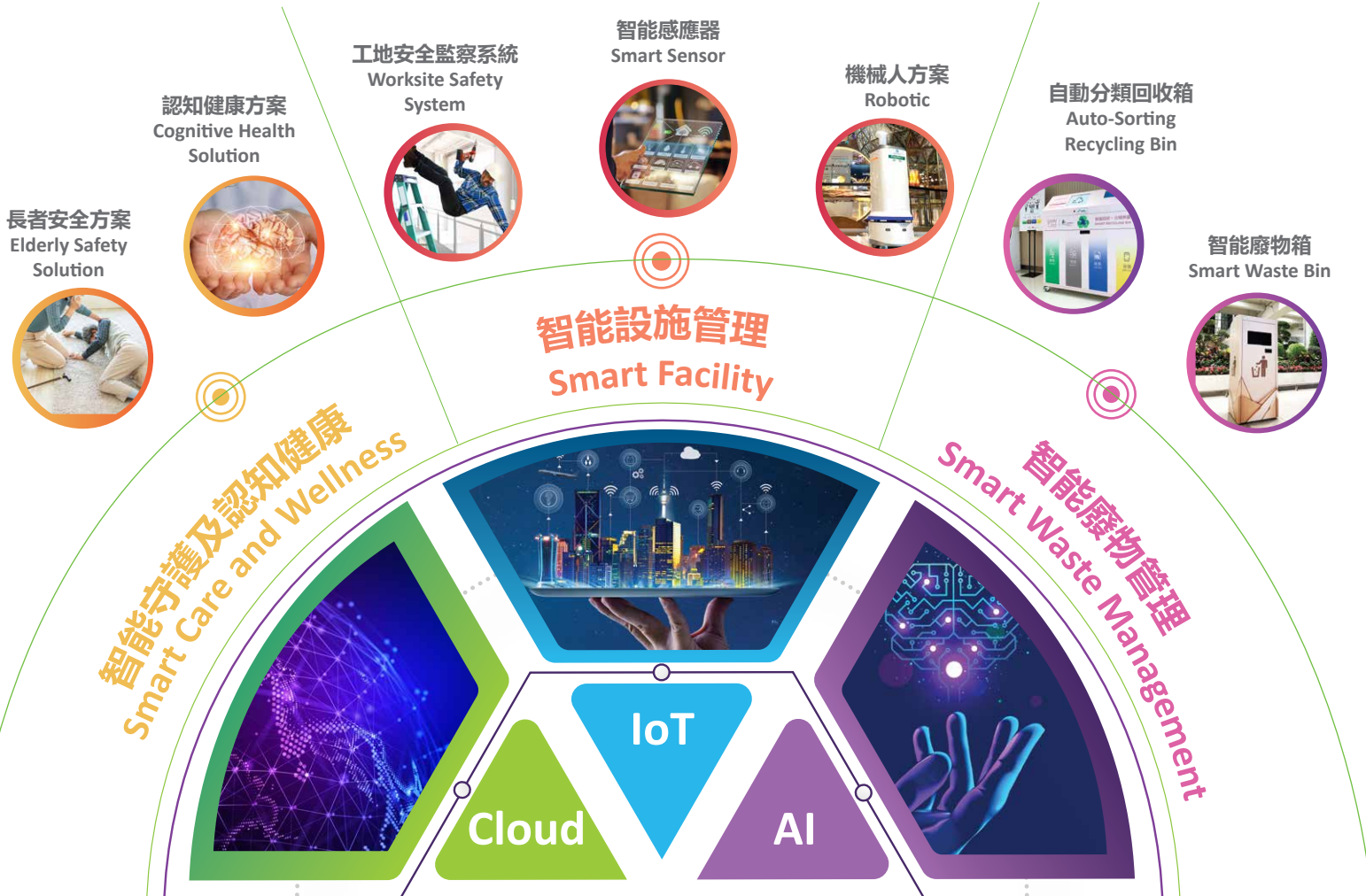
TECHNOVATION

衛晉科技方案

GF Technovation Technology Solutions

善用科技 致力革新

Transforming with Advance Technology



衛晉創新科技有限公司揉合物聯網科技、雲端科技及人工智能，對應長者安全及認知健康、設施管理及安全，以及廢物管理三個範疇，設計了創新的科技方案，協助企業優化管理、自動化營運並提升效率。

GF Technovation combines IoT, Cloud and AI technologies to formulate innovative solutions for Smart Care and Wellness, Facility Management and Safety, and Waste Management. The solutions help companies improve control, automate operations and enhance efficiency.

請向我們的同事了解如何利用科技優化管理及營運

Contact us to find out how to optimize management and operations with technology

GF Technovation Company Limited

(852) 2765 2681 | mkt@gftechnovation.com.hk | www.gftechnovation.com.hk



智能廢物/廚餘/自動分類回收箱

Smart Waste/ Food Waste / Auto- Sorting Recycling Bin

利用科技高效地管理廢物/回收箱 應對廢物徵費政策

衛管利用科技方案支援各界提升廢物管理，共同建設可持續發展的未來，為推進環保出力。我們的智能廢物箱、智能廚餘回收箱、自動分類回收箱各具獨特功能，可有效應對各種廢物管理和回收的要求。廢物回收箱更可加設不同功能，如紀錄用戶資料、磅重等，配合用家的需要。

Smart way to manage waste / recycle bins

GF Technovation's smart solutions support waste management for different sectors. Our Smart Waste Bin, Smart Food Waste Bin and Auto-sorting Recycling Bin are packed with powerful features catering to diverse waste management and recycling needs. Choose functions as required, including recording user details and weighing the disposed waste. Together we will build a sustainable future with green solutions.

了解更多
Learn more



智能廢物箱 Smart Waste Bin



- 太陽能廢物壓縮器
- 滿載量警示
- 廢物箱容量可增加5倍
- 雲端平台支援數據收集及分析
- 車隊管理平台
- Solar-powered compactor
- Fill-level alert
- Can hold 5 times more waste
- Data are stored & retrieved via cloud-based platform
- Fleet management with real-time data

智能廚餘回收箱 Smart Food Waste Bin



- 核實用戶身份
- 滿載量警示
- 自動消毒及除臭
- 雲端平台支援數據收集及分析
- 自動磅重記錄
- User identification
- Fill-level detection
- Auto-deodorization & sterilization
- Data is sent to cloud-based platform
- Waste weighing

自動分類回收箱 Auto-sorting Recycling Bin



- 核實用戶身份
- 自動垃圾分類
- 滿載量警示
- 自動壓縮
- 可透過手機應用程式查看實時數據
- User identification
- Auto waste sorting
- Fill-level detection
- Auto compression
- Real time data can be viewed via apps

* 功能可按用家需要加減

*Choose functions as per your needs

益處 Benefits



優化車隊管理
Logistics optimization



按需要而安排清潔，精簡人手
Clean on demand



改善衛生
Improve hygiene



增加廢物箱儲存量
Enlarge capacity



多元數據分析
Data insight



簡單方便
User friendly

智能工業安全警報系統

Smart Worksite Safety Monitoring System

工地安全 一目了然

採用物聯網、人工智能及影像分析科技，再配合不同硬件，以低成本及自動化系統全天候監督工地安全，同時提升保安系數。

警報系統連接感應器及鏡頭，當偵測到工地出現異常時，系統會立即發送附有照片的警報提示到預設的流動應用程式或電郵，加上實時視像監控，現場情況一目了然。

系統可按工程的需要增減功能組合，做到度身訂造，更靈活地配合個別需要。



Track work site safety on a single dashboard

Ensure work site safety with this low-cost and automated system for 24/7 monitoring, making use of IoT, artificial intelligence and image analysis technologies and suitable hardware.

When an anomaly is detected, the alarm system connected to sensors and cameras will issue an instant photo alert to the designated mobile app or email. Real-time video for viewing the work site is also enabled.

Choose a combination of functions that suits your project.

多元功能 Features



即時統計人數
Instant people counting



異物偵測
Abnormal object detection



進入禁區偵測
Trespassing detection



無配戴頭盔偵測
No-helmet detection



實時影像
Real-time monitoring



電郵或通訊APP
訊息提示
Email and Whatsapp alert



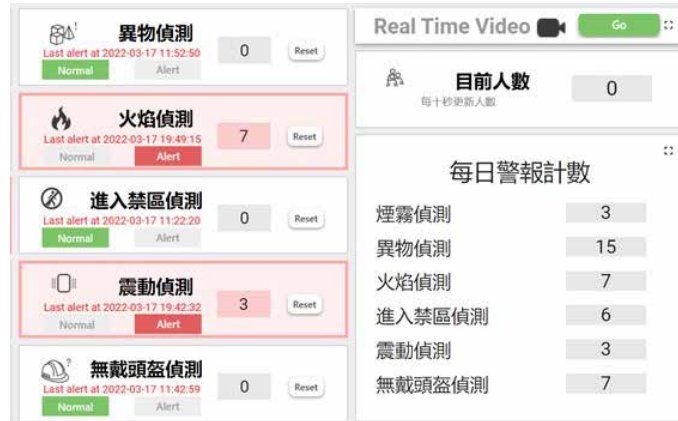
煙霧及火焰偵測
Smoke and fire detection



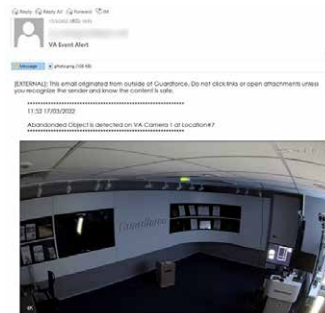
觀看影片
Watch Video



了解更多
Learn more



系統控制版面
User-Friendly System Control Interface



電郵提示
Email notification with photo



通訊APP訊息提示
WhatsApp notification with photo

智能洗手間管理系統

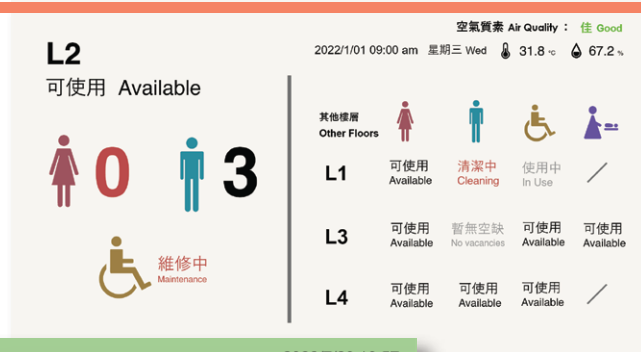
Smart Toilet System

提升營運效率 舒緩人手短缺 提升客戶體驗

智能清潔科技方案結合不同感應器，偵測洗手間內實時情況，按需要時才派員工清潔或跟進，有助減輕人手需求，亦可為設施使用者提供更潔淨的洗手間設施，提升客戶體驗。

Elevate efficiency and customer experience, with less manpower

Multiple sensors are embedded to check the real-time condition of a toilet. Cleaning can be arranged only when required, so you can use less manpower to keeping toilets pleasant.



了解更多
Learn more



功能 Features

人數統計

計算進出洗手間的人數，了解每個設施的使用模式，從而根據數據提前計劃人力及資源分配。



People Counting

Count people flow in a toilet to gauge usage and collect data for planning manpower and resources deployment.

室內空氣質素感應器

測量氣味濃度水平，深入瞭解洗手間的清潔度，更可遠程監控衛生間的清潔狀態。



Ammonia Sensor

Measure odor concentration to check toilet condition and remotely monitor toilet hygiene

消耗品用量分析推算

依據以往用量推算皂液或衛生紙之補充時間，向清潔工發送警報提醒更換或填補。



Consumable Sensor

Project the timing for replenishing hand soap and toilet rolls based on historical usage data, and send reminders to cleaners for refilling.

洗手間佔用率及排隊情況

利用非鏡頭技術檢測廁格是否正被使用，並計算可供使用的廁格數目及預計輪候時間。



Vacancy Indication

Monitor with non-camera technology whether a cubicle is occupied, and calculate expected waiting time.

跌倒警報

利用非鏡頭技術偵測和判斷洗手間使用者有否跌倒。如發現使用者跌倒後沒有任何動靜，系統將自動發出警報，通知相關人士。



Fall Detection

Detect with non-camera technology if a person has fallen down inside a cubicle, and automatically issue alarm for assistance if the person remains motionless.

雲端數據管理平台

利用大數據改善管理。讓業主、設施管理人 (FM) 和清潔公司經理可同時監控多個洗手間的使用情況。



Cloud Data Management Platform

Use big data to improve management, and support simultaneous monitoring of multiple restrooms by facility owners and managers of facility management and cleaning companies.

開啟自動化營運 應對人手短缺挑戰

無論餐飲、零售、清潔、保安等多個行業皆面對人手短缺的挑戰。衛晉主張利用科技解決為社會及客戶提供解決方案，因而引進以下多款智能機械人協助不同行業應對日常營運，減少對人手的依賴，並提升效率。

Enable Smart Operation to Overcome Manpower Crunch

Tight manpower supply is affecting many sectors, from catering to retail, cleaning and security. GF Technovation delivers the right technological solutions to solve problems for the community and customers. A range of intelligent robots is available to support the routine operation of different sectors, and enhance efficiency despite labor shortage.



智能消毒機械人

智能消毒機械人以噴霧模式，使用對人體無害而有效的消毒劑，在預設時間內隨時隨地，為設施全面消除病毒，確保場所清潔衛生。

Disinfection Robot

The Disinfection Robot can nozzle-spray human-safe disinfectant at pre-set schedules, anytime, anywhere, for complete disinfection of a facility to maintain public hygiene.



禮賓機械人

禮賓機械人可有效率、可靠地接待訪客，並附設助理、監控、嚮導、看護及互動等功能。機械人有Wi-Fi連線、自主充電、自動避開障礙物等功能，可全日24小時隨時隨地流暢運作。

Customer Service Robot

The Customer Service Robot can efficiently and reliably provide customer service to visitors, serving as an all-in-one assistant, monitor, tour guide and nurse, and able to interact with humans. The robot is Wi-Fi connected, and able to auto-recharge and steer clear of obstacles, operating 24/7 anywhere smoothly.



送遞機械人

送遞機械人可自行在複雜的多層空間，持續運作往來派遞物品，有助保障公共衛生，減少人與人接觸。機械人設有智能儲存箱，保障運送物品可安全運抵目的地。

Delivery Robot

The Delivery Robot can navigate across complex multi-story spaces to deliver items non-stop. Human contact can be minimized to enhance public health. It is equipped with a smart container, making sure all packages are securely delivered to the intended locations and people.



巡邏機械人

巡邏機械人可進行 24/7 全天候安全巡邏和室內外場地的移動監控，即使在極端天氣條件下也可如常執行巡邏任務。

Patrol Robot

The Patrol Robot can operate 24/7 in all weathers to conduct security patrol indoors and outdoors with high mobility. Even extreme weather will not stop this robot from carrying out its duty.



清潔機械人

清潔機械人加入先進人工智能，進一步提升清潔的效率，最適用於依賴人手的傳統工種，減輕人力需求。

Cleaning Robot

The Cleaning Robot boasts intelligent features to make cleaning more efficient, making it highly suitable to reduce manpower needs for such labor-intensive jobs.



智能守護及認知健康方案

Smart Care and Wellness Solutions

長者安全方案 Elderly Safety Solution



智能防遊走方案

香港及澳門首創容貌識別防遊走綜合方案，利用容貌識別技術，減低長者及服務對象走失的機會，並減輕護理人員及照顧者的負擔和壓力。方案榮獲香港及亞太區多個獎項，至今已有接近100間院舍及日間中心正在使用。

Anti-wandering Solution

Hong Kong and Macau's first Anti-wandering solution powered by facial recognition can minimize the risk of elderly residents or people in care wandering off, while alleviating the care burden and stress for caregivers. The solution has won various Hong Kong and Asia Pacific awards, and has been adopted by nearly 100 elderly care facilities and day-care centers.



跌倒及離床警報系統

利用雷達科技偵測受關注人士的活動情況，以非影像技術進行偵測，尊重看護對象的私隱。系統如發現有人跌倒、自行離床或與出現打鬥時，系統將自動發出警報，通知護理人員。

Bed Exit and Fall Detection

The Bed Exit and Fall Detection System uses radar technology to detect the movement of the subject. If it detects a fall, gets out of bed on its own, or has a fight, it will immediately send an alert to notify the caregiver.



生命徵象感應器

適用於偵測跌倒意外的非接觸式感應裝置，用脈衝無線電超寬頻雷達技術，在10米範圍內感應細微的震動。當無法感應監察對象的心跳、呼吸或動作任何一種動靜，會發出警號。

Vital Signs Sensor

Contactless Vital Signs Sensor continuously scan a designated space to check if a person has fallen down or remains still for a long duration. When this happens, the sensor will measure the person's heart rate and breathing rate, and will send alert for help if these vital signs appear abnormal. The device ensures help can be rendered immediately to save lives.



Vitals綜合臥床監控系統

即插即用，利用心衝擊圖(BCG)感應科技偵測心跳、呼吸和動作等細微的顫動。當某一個徵象超出正常水平時，或感應器顯示臥床人士自行離床，負責的人員會透過智能電話、平板電腦或儀錶板接收到警報。

Vitals Two-in-one Solution

The plug-and-play solution uses BCG sensing technology to track heart rate, breathing and tiny movements. When any indicator is out of the ordinary, or when the device senses the monitored individual is getting off the bed unassisted, an alert will be sent to the carer via a smart phone, tablet or the dashboard.

認知健康方案 Cognitive Health Solution



Ex-Brain 腦活動感應器

ExBrain榮獲第九屆亞洲長者護理創新大獎認知障礙症科技解決方案年度創新大獎，透過紅外線技術及腦力遊戲，實時檢測大腦活動，對大腦提供最有效的訓練，從而提升生活、工作及學習的質素，協助預防認知障礙。

Ex-brain brain activity sensor

Ex-brain, which won the award the Innovation of The Year – Dementia Technology Solution in the 9th Eldercare Innovation Awards 2021, uses near-infrared technology and brain games to assess brain activity level in real-time. It can help to optimise brain training and enhance users' quality of life, work and learning that can contribute to preventing cognitive degeneration.



Obie互動投影器

Obie是互動遊戲機，內置高端投影器，可將影像投影至地面、牆面或桌面等各種表面，使用者只要接觸投放的影像，即可參與遊戲。遊戲機提供超過50款有趣的遊戲，有不同的難度水平，可刺激認知力、提升社交互動、鼓勵長者活動肢體，提升長者的身心健康。遊戲會不時地更新。

Obie Interactive Projector

Obie is an interactive gaming console with an embedded advanced projector that projects images onto any surface, like floors, walls, and tabletops for playing games. It contains more than 50 games of various difficulty levels to stimulate cognition and enhance socialisation, while encouraging the elderly to move around to improve their well-being. The games can be updated from time to time.



VR 360 虛擬實境眼鏡

VR360 虛擬實境眼鏡，帶領長者遊覽香港各區域，長者足不出戶亦可體驗各區的氣氛。另有個性化內容，切合不同長者中心的需要。

VR360 Virtual Reality Goggles

Through VR360 virtual reality goggles, seniors are taken on tours to see and experience different areas of Hong Kong, in the comfort of their seats. Content can be tailored for individual care homes.